

## **XICATO LED COOLING**

For Xicato XIM, XTM, XSM and XLM  
LED modules - Off the shelf  
Passive and active LED cooling

- Validated Thermal Designs
- Adaptable to your Needs
- Functional & Aesthetic

# **XICATO**

**MTx**  
**MechaTronix**



## Mastering LED Cooling

With the evolution of LED lighting over the last years, the demand for professional thermal solutions has grown exponentially. And now that we no longer remain in the realm of low power LED's, thermal management becomes a critical factor within LED fixtures. To that end, MechaTronix has developed several series of pin-fin and star heat sinks, manufactured through die casting, forging or extrusion. This has resulted in a comprehensive range of more than 400 off-the-shelf available LED coolers, for passive or active heat dissipation.

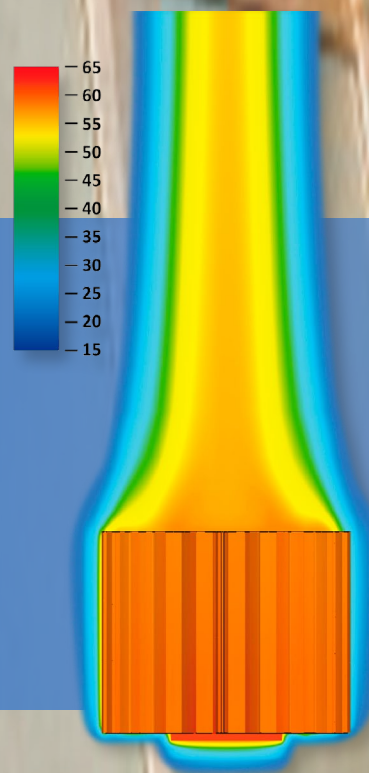
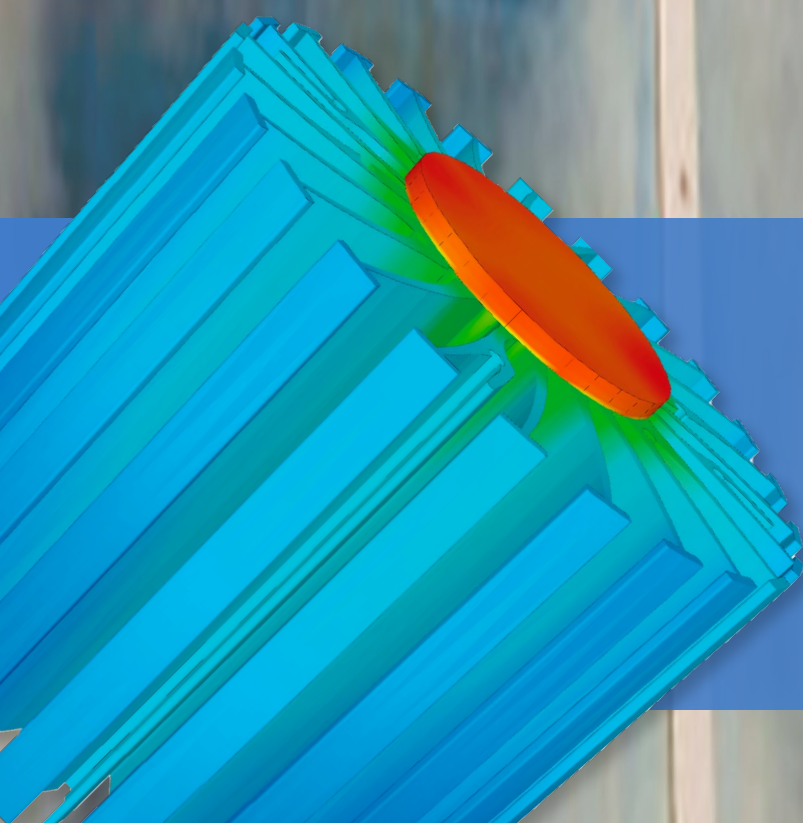
After initial reservations concerning active LED coolers, specialists have found that there really is no better option, when closing in on the 8000 lumen mark. Admittedly, the fan's lifespan becomes somewhat of a focal point in the application of an active LED cooler, but given that the lifespan of the LED engine itself dramatically decreases at high temperatures, the lifespan of the fan looks rather favourable all of a sudden.

MechaTronix' ground breaking ModuLED coolers and its actively cooled sibling IceLED have garnered a lot of attention and positive reviews in the LED market. ModuLED and IceLED are just precursors of a complete range of dedicated and highly effective LED coolers for professional deployment in spotlights, downlights, high bays and a further score of architectural and utility LED applications.

Both ModuLED and IceLED, as well as their upcoming descendants are Zhaga-ready and have a matrix of mounting holes that allows for very easy attachment of a great number of various Xicato LED modules. Simply apply a thermal interface of your choice, put the LED engine in place and fasten with self-tapping screws and you are good to go! No drilling, customisation or special mounting brackets are needed.

Thanks to an extremely thorough thermal verification of all heat sink lines, MechaTronix provides total thermal disclosure for each model, coupled with all Xicato LED engines. All thermal data is available in the product specifications, that come with every MechaTronix heat sink. In this way, engineers save time and effort during the design stage of their LED fixture and will significantly shorten their time to market.

## OUR PROCESS STARTS WITH LISTENING



# XICATO LED COOLING

For Xicato XIM, XTM, XSM and XLM  
LED modules - Off the shelf  
Passive and active LED cooling

(Thermal class based on 40°C ambient and 60deg tilt)

## (center cable hole) XSA-218



Xicato LED Pin Fin cooler  
Thermal class E  
ø47mm - h68mm - Rth 3.9°C/W  
Cooling performance 600 - 2,200 lm

Direct mount	Zhaga holder	Xicato LED modules
<input checked="" type="checkbox"/>		XSM

## (side cable hole) XSA-217



Xicato LED Pin Fin cooler  
Thermal class E  
ø47mm - h68mm - Rth 3.9°C/W  
Cooling performance 600 - 2,200 lm

Direct mount	Zhaga holder	Xicato LED modules
<input checked="" type="checkbox"/>		XSM
<input checked="" type="checkbox"/>		XIM
<input checked="" type="checkbox"/>		XTM

## XSA-60



Xicato LED Pin Fin cooler  
Thermal class D  
ø50mm - h30mm - Rth 6.9°C/W  
Cooling performance 330 - 1,000 lm

Direct mount	Zhaga holder	Xicato LED modules
<input checked="" type="checkbox"/>		XSM
<input checked="" type="checkbox"/>		XIM
<input checked="" type="checkbox"/>		XTM

## XSA-61



Xicato LED Pin Fin cooler  
Thermal class E  
ø50mm - h50mm - Rth 5.1°C/W  
Cooling performance 450 - 1,400 lm

Direct mount	Zhaga holder	Xicato LED modules
<input checked="" type="checkbox"/>		XSM
<input checked="" type="checkbox"/>		XIM
<input checked="" type="checkbox"/>		XTM

## XSA-62



Xicato LED Pin Fin cooler  
Thermal class E  
ø60mm - h50mm - Rth 4.0°C/W  
Cooling performance 600 - 1,800 lm

Direct mount	Zhaga holder	Xicato LED modules
<input checked="" type="checkbox"/>		XSM
<input checked="" type="checkbox"/>		XIM
<input checked="" type="checkbox"/>		XTM

## XSA-63



Xicato LED Pin Fin cooler  
Thermal class E  
ø70mm - h30mm - Rth 4.1°C/W  
Cooling performance 550 - 1,700 lm

Direct mount	Zhaga holder	Xicato LED modules
<input checked="" type="checkbox"/>		XSM
<input checked="" type="checkbox"/>		XIM
<input checked="" type="checkbox"/>		XTM

## XSA-64



Xicato LED Pin Fin cooler  
Thermal class G  
ø70mm - h50mm - Rth 3.0°C/W  
Cooling performance 750 - 2,300 lm

Direct mount	Zhaga holder	Xicato LED modules
<input checked="" type="checkbox"/>		XSM
<input checked="" type="checkbox"/>		XIM
<input checked="" type="checkbox"/>		XTM

## XSA-65



Xicato LED Pin Fin cooler  
Thermal class G  
ø70mm - h60mm - Rth 2.8°C/W  
Cooling performance 800 - 2,500 lm

Direct mount	Zhaga holder	Xicato LED modules
<input checked="" type="checkbox"/>		XSM
<input checked="" type="checkbox"/>		XIM
<input checked="" type="checkbox"/>		XTM





### XSA-66

Xicato LED Pin Fin cooler  
Thermal class F  
ø80mm - h30mm - Rth 3.3°C/W  
Cooling performance 700 - 2,100 lm

Direct mount	Zhaga holder	Xicato LED modules
✓		XSM
✓		XIM
✓		XTM



### XSA-67

Xicato LED Pin Fin cooler  
Thermal class F  
ø80mm - h50mm - Rth 2.34°C/W  
Cooling performance 1,000 - 3,000 lm

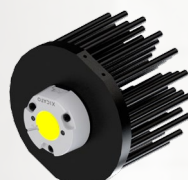
Direct mount	Zhaga holder	Xicato LED modules
✓		XSM
✓		XIM
✓		XTM



### XSA-219

Xicato LED Pin Fin cooler  
ø86mm - h68mm - Rth 1.46°C/W  
Cooling performance 1,500 - 4,600 lm

Direct mount	Zhaga holder	Xicato LED modules
✓		XSM
✓		XIM
✓		XTM



### XSA-96

Xicato LED Pin Fin cooler  
Thermal class Q  
ø111mm - h80mm - Rth 1.17°C/W  
Cooling performance 2,000 - 6,000 lm

Direct mount	Zhaga holder	Xicato LED modules
✓		XSM
✓		XIM
✓		XTM



### XSA-37

Xicato LED Star cooler  
Thermal class C  
ø49mm - h35mm - Rth 6.9°C/W  
Cooling performance 330 - 1,000 lm

Direct mount	Zhaga holder	Xicato LED modules
✓		XSM
✓		XIM
✓		XTM



### XSA-39

Xicato LED Star cooler  
Thermal class F  
ø70mm - h40mm - Rth 3.11°C/W  
Cooling performance 750 - 2,300 lm

Direct mount	Zhaga holder	Xicato LED modules
✓		XSM
✓		XIM
✓		XTM



### XSA-38

Xicato LED Star cooler  
Thermal class G  
ø70mm - h70mm - Rth 2.47°C/W  
Cooling performance 900 - 2,800 lm

Direct mount	Zhaga holder	Xicato LED modules
✓		XSM
✓		XIM
✓		XTM



### XSA-31

Xicato LED Star cooler  
Thermal class K  
ø99.4mm - h40mm - Rth 1.55°C/W  
Cooling performance 1,500 - 4,500 lm

Direct mount	Zhaga holder	Xicato LED modules
✓		XSM
✓		XIM
✓		XTM

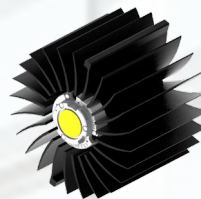
### XSA-27



Xicato LED Star cooler  
Thermal class N  
ø99mm - h70mm - Rth 1.2°C/W  
Cooling performance 1,800 - 5,500 lm

Direct mount	Zhaga holder	Xicato LED modules
✓		XSM
✓		XIM
✓		XTM

### XSA-54



Xicato LED Star cooler  
Thermal class R  
ø120mm - h87mm - Rth 0.87°C/W  
Cooling performance 2,500 - 7,500 lm

Direct mount	Zhaga holder	Xicato LED modules
✓		XSM
✓		XIM
✓		XTM

### XSA-28



Xicato LED Star cooler  
Thermal class Q  
ø134mm - h40mm - Rth 0.99°C/W  
Cooling performance 2,200 - 6,600 lm

Direct mount	Zhaga holder	Xicato LED modules
✓		XSM
✓		XIM
✓		XTM

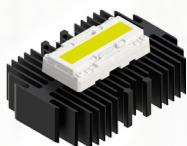
### XSA-99



Xicato Modular Active LED cooler  
Thermal class Q  
ø99mm - h45mm - Rth 0.58°C/W  
Cooling performance 3,500 - 10,500 lm

Direct mount	Zhaga holder	Xicato LED modules
✓		XSM
✓		XIM
✓		XTM

### XLA-16



Xicato LED extruded cooler  
Thermal class R  
101mm(W) x 140mm(L) x 35mm(H)  
Cooling performance 2,000 - 3,500 lm

Direct mount	Zhaga holder	Xicato LED modules
✓		XLM

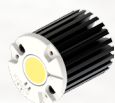
### XLA-15



Xicato LED extruded cooler  
Thermal class U  
101mm(W) x 140mm(L) x 50mm(H)  
Cooling performance 2,500 - 4,500 lm

Direct mount	Zhaga holder	Xicato LED modules
✓		XLM

### XSA-215



Xicato Modular LED Star cooler  
Thermal class D  
ø47mm - h50mm - Rth 5.3°C/W  
Cooling performance 400 - 1,400 lm

Direct mount	Zhaga holder	Xicato LED modules
✓		XSM
✓		XIM
✓		XTM

### XSA-216



Xicato Modular LED Star cooler  
Thermal class E  
ø47mm - h80mm - Rth 4.2°C/W  
Cooling performance 600 - 1,800 lm

Direct mount	Zhaga holder	Xicato LED modules
✓		XSM
✓		XIM
✓		XTM

### XSA-212



Xicato Modular LED Star cooler  
Thermal class G  
ø70mm - h50mm - Rth 2.2°C/W  
Cooling performance 1,000 - 3,100 lm

Direct mount	Zhaga holder	Xicato LED modules
✓		XSM
✓		XIM
✓		XTM

### XSA-213



Xicato Modular LED Star cooler  
Thermal class H  
ø70mm - h80mm - Rth 1.8°C/W  
Cooling performance 1,200 - 3,800 lm

Direct mount	Zhaga holder	Xicato LED modules
✓		XSM
✓		XIM
✓		XTM



### XSA-300



Xicato Modular LED Star cooler  
Thermal class G  
ø86mm - h30mm - Rth 1.8°C/W  
Cooling performance 1,200 - 3,800 lm

Direct mount	Zhaga holder	Xicato LED modules
✓		XSM
✓		XIM
✓		XTM

### XSA-301



Xicato Modular LED Star cooler  
Thermal class H  
ø86mm - h50mm - Rth 1.5°C/W  
Cooling performance 1,500 - 4,500 lm

Direct mount	Zhaga holder	Xicato LED modules
✓		XSM
✓		XIM
✓		XTM

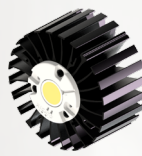
### XSA-302



Xicato Modular LED Star cooler  
Thermal class K  
ø86mm - h80mm - Rth 1.2°C/W  
Cooling performance 1,800 - 5,500 lm

Direct mount	Zhaga holder	Xicato LED modules
✓		XSM
✓		XIM
✓		XTM

### XSA-97



Xicato Modular LED Star cooler  
Thermal class L  
ø99mm - h50mm - Rth 1.34°C/W  
Cooling performance 1,600 - 5,000 lm

Direct mount	Zhaga holder	Xicato LED modules
✓		XSM
✓		XIM
✓		XTM

### XSA-98



Xicato Modular LED Star cooler  
Thermal class N  
ø99mm - h80mm - Rth 1.02°C/W  
Cooling performance 2,100 - 6,400 lm

Direct mount	Zhaga holder	Xicato LED modules
✓		XSM
✓		XIM
✓		XTM

### XSA-305



Xicato Modular LED Star cooler  
ø111mm - h80mm - Rth 1.0°C/W  
Cooling performance 2,100 - 6,500 lm

Direct mount	Zhaga holder	Xicato LED modules
✓		XSM
✓		XIM
✓		XTM

### XSA-303



Xicato Modular LED Star cooler  
ø134mm - h30mm - Rth 1.2°C/W  
Cooling performance 1,800 - 5,500 lm

Direct mount	Zhaga holder	Xicato LED modules
✓		XSM
✓		XIM
✓		XTM

### XSA-312



Xicato Modular LED Star cooler  
ø152mm - h20mm - Rth 1.02°C/W  
Cooling performance 2,100 - 6,400 lm

Direct mount	Zhaga holder	Xicato LED modules
✓		XSM
✓		XIM
✓		XTM

### XSA-313



Xicato Modular LED Star cooler  
ø152mm - h50mm - Rth 0.64°C/W  
Cooling performance 3,300 - 10,000 lm

Direct mount	Zhaga holder	Xicato LED modules
✓		XSM
✓		XIM
✓		XTM

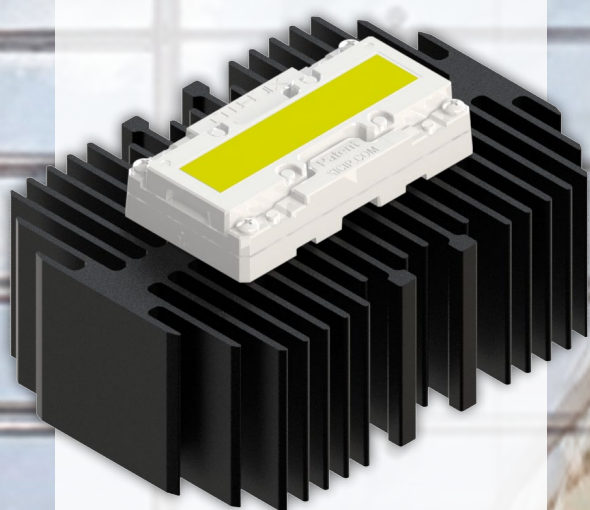
### XSA-314



Xicato Modular LED Star cooler  
ø152mm - h100mm - Rth 0.47°C/W  
Cooling performance 4,100 - 12,500 lm

Direct mount	Zhaga holder	Xicato LED modules
✓		XSM
✓		XIM
✓		XTM





Your local distributor:

OUR PROCESS STARTS WITH LISTENING

