

DATA SHEET

XCT-0101: Xicato Configuration Tool



About Xicato

Xicato designs and develops light sources and electronics that enable architects, designers and building managers to create beautiful, smart spaces in which people love to live and work. With thousands of installations around the globe, Xicato continues to be a leading supplier of high quality lighting solutions. Xicato is defining the future of intelligent light sources by integrating electronics, software and connectivity. Founded in 2007, Xicato's headquarters is based in Silicon Valley and the company has offices in China, Japan, Europe and the US.

For further information, visit www.xicato.com.

ABOUT THIS DOCUMENT

This is just one of many documents and tools available from Xicato to assist lighting designers, specifiers, and luminaire manufacturers in understanding and using Xicato products. These include:

- Datasheets
- Test reports, including third party LM-80, UL, CE, and FCC
- Accessory selection tools for heatsinks, optics, and drivers
- CAD files and drawings
- IES files
- Application and Technical Notes
- Training presentations
- Sales brochures
- Technical whitepapers
- ... and more

Go to the Xicato website under Support / Documents and Tools, or contact your local Xicato representative for more information

TABLE OF CONTENTS

XCT-0101: Xicato Configuration Tool	1
About This Document	2
Table of Contents	2
General Description	3
Features	3
Ordering Guide.....	5
Mechanical Specifications	5
Electrical Specifications.....	6
Environmental Safety	6

GENERAL DESCRIPTION

XCT – THE XICATO CONFIGURATION TOOL

The Xicato Configuration Tool is a “black box” system of software and hardware that integrates Xicato custom software into a standard, Linux-based computing platform with a custom Xicato printed circuit board assembly (PCBA) that allows the powering and software configuration of Xicato Intelligent Modules (XIM).

XIM is a compact, integrated LED lighting module designed to fit a wide variety of downlight and spot fixtures, and to simplify the design and assembly of controllable LED luminaires. The XIM includes:

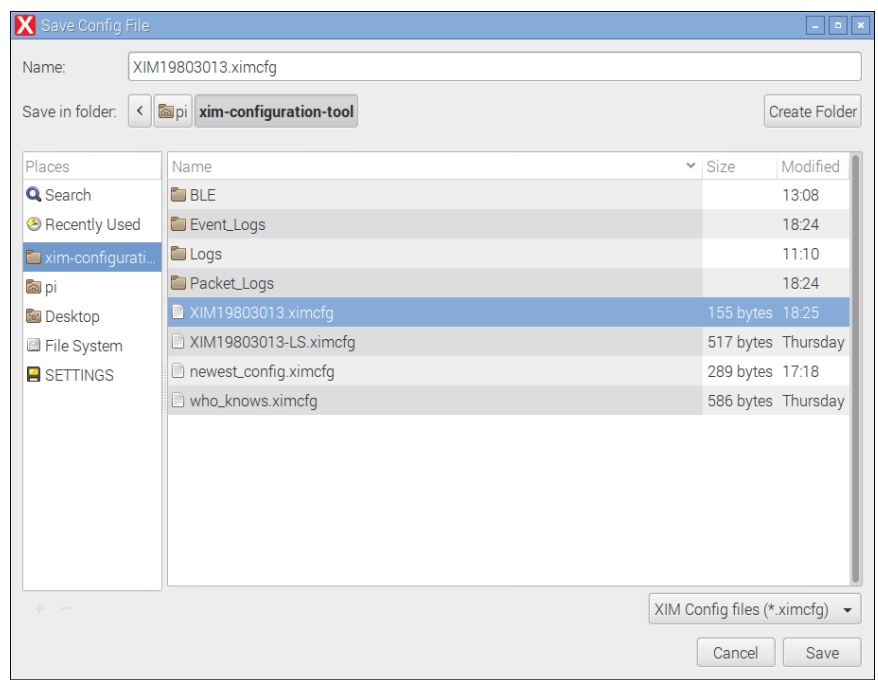
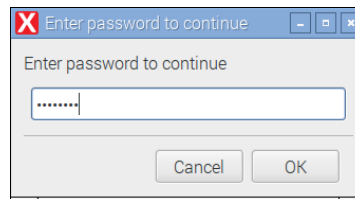
- LED emitting core
- Drive electronics – constant voltage to constant current (dimmable)
- Microprocessor with firmware and static random access memory (SRAM)
- Internal sensors that detect LED and PCB temperature, intensity, input voltage and ripple, and other operating parameters

With the release of the Xicato Configuration Tool, lighting manufacturers can pre-configure the XIM in a variety of ways to digitally brand and label their products, customize lumen output to specific heatsinks or environmental conditions, and simplify product installation and provisioning, while potentially reducing their XIM product inventory.

FEATURES

PRODUCTION FEATURES

- Password protected Setup Mode allows creation of standard setup parameters
- Separate Production Mode ensures quality control in production
- Save and Load setup files for quick re-use



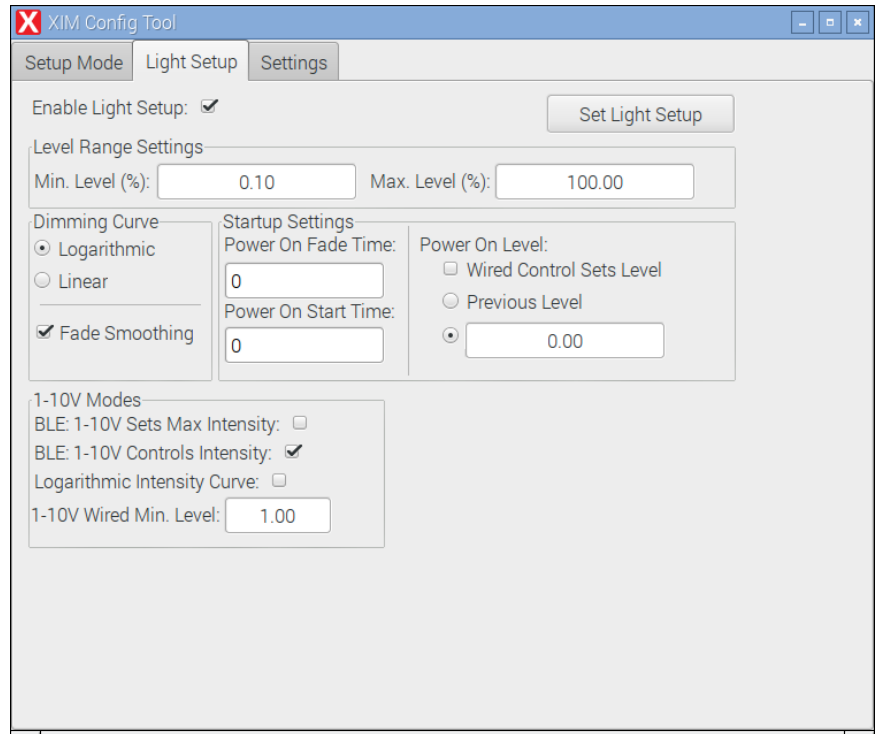
- Part code validation checks whether setup is for a valid XIM model
- Setup / Product match verification checks whether configuration file matches the part being configured
- Production Setup verification provides immediate feedback on success or failure of module programming

NON-USER MODIFIABLE CONFIGURATION

- Set maximum module flux to between 50% - 100% of module max
- Enter a custom Serial Number, with manual or automatic incrementing
- 36-character, free data entry field for additional manufacturer data, such as
 - Manufacturer name
 - Luminaire model number
 - Project name
 - Support phone
 - Manufacturing, ship or install date
 - Etc.
- Bluetooth Low Energy scan response (device) name

USER-MODIFIABLE MODULE PRE-CONFIGURATION

- Minimum and maximum intensity levels
- Dimming curve: log or linear
- Power-on start delay, intensity level and fade time
- DALI and 1-10V pre-sets



ORDERING GUIDE

Part Number	Description
XCT-0101	Xicato Configuration Tool with PSU, XIM wiring harness

MECHANICAL SPECIFICATIONS

Module Housing	Aluminum
Dimensions	91mm x 67mm x 29mm (3.6" x 2.6 x 1.1") without dongle 100mm x 67mm x 29mm (3.9" x 2.6" x 1.1") with dongle
Weight	128 grams (4.5 oz.)
Shipping weight	302 grams (10.7 oz.) including power supply unit
Operating Temperature	≤ 45°C
Storage Temperature	-40°C to +85°C

ELECTRICAL SPECIFICATIONS

Recommended Power Input	5.1V, 2.5A capacity
Power Consumption, typical	Idle: 230mA (1.2W) Display 1080p Video: 290mA (1.5W) 400% CPU load: 730mA (3.9W)
Off-state power (plugged in)	20-30mA (0.1W)
Processors	1.2 GHz 64-bit quad-core ARM Cortex-A53 CPU VideoCore IV 3D graphics core 300 MHz
Memory	1 GB LPDDR2 RAM, 900 MHz
Physical I/O Interfaces	4 USB ports (keyboard, mouse, etc.) Full HDMI port Ethernet port (10/100, RJ-45) Combined 3.5mm audio jack and composite video MicroSDHC card slot (push-pull) with 16GB MicroSD card preloaded with XCT software
Wireless I/O	Bluetooth Low Energy (BLE) through pre-installed dongle 802.11n Wireless LAN (WiFi) – disabled by default
FCC Certification	FCC DSS Part 15C Spread Spectrum Transmitter, ID 2ABCB-RPI32

ENVIRONMENTAL SAFETY

RoHS compliant	
Lead content:	None
Mercury content:	None
UV or IRC Emissions:	None